



Nimb

COPENHAGEN

DEFINING LUXURY AND EXPERIENCE  
THROUGH PASSION AND PEOPLE

# WELCOME TO NIMB HOUSE

A house of world-class gastronomic excellence  
and inspiring history through more than 100 years.  
One of Denmark's most luxurious hospitality offerings  
and a member of the exclusive 'Small Luxury Hotels of the world'.  
Standing proud amidst the magical Tivoli Gardens,  
offering a truly local experience, in romantic, intimate  
and heartwarming surroundings.





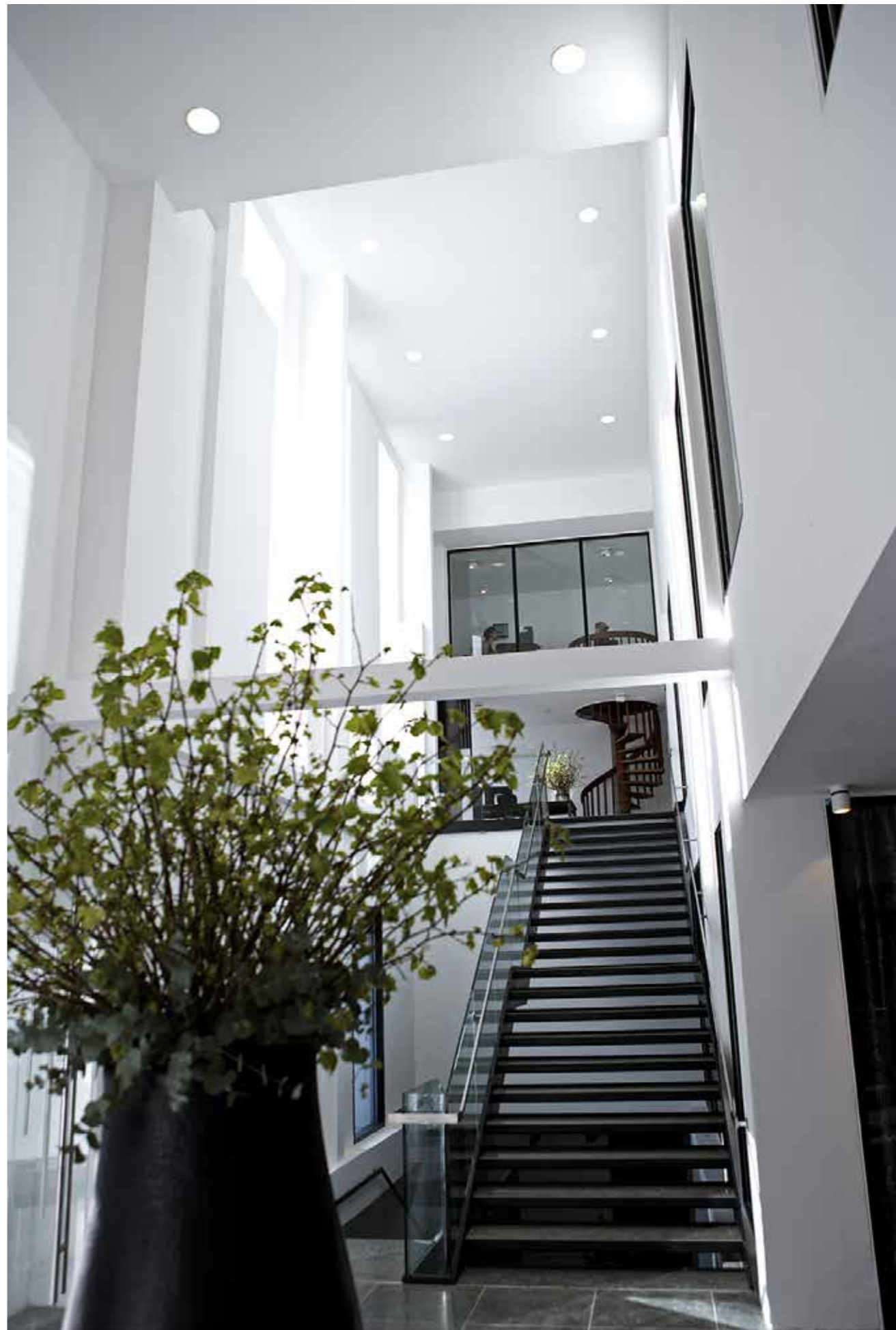


# Nimb

---

1 HOTEL  
6 RESTAURANTS  
& BARS









*Nimb*  
HOTEL



# WELCOME TO NIMB HOTEL

Nimb Hotel is a Moorish palace, set amidst the magical Tivoli Gardens and by interior a warm sense of contemporary nordic design is represented. An intimate boutique hotel with spacious, individually designed rooms, where guests can revel in luxurious comfort.







# Nimb HOTEL

---

17 ROOMS

Individually designed  
from 23-240 m<sup>2</sup>

---

- Free wifi
- 24 hour room service
- Fireplace
- Limousine service
- Tour guide service
- Personal concierge service
- Washing and cleaning service
- Access to fitness room
- In room massage treatments
- Complimentary entry to  
the Tivoli Gardens























*Nimb*

RESTAURANTS & BARS



## 6 NIMB RESTAURANT EXPERIENCES

Each evoking one message of quality,  
yet with their own strong individual concept appeal.





*Nimb*  
**BRASSERIE**

---

FRENCH BRASSERIE

---

165 GUESTS SEATED

**ABOUT:**

French favourites served for breakfast, lunch and dinner with a breathtaking view of Tivoli. Nimb's largest restaurant attracts both hotel guests and locals, who enjoy a great meal in beautiful yet informal surroundings. The Nimb Brasserie also serves a magnificent Nimb 11 brunch with 11 different Bloody Marys and 11 carefully selected brunch dishes each Sunday.









**ABOUT:**

Step into Nimb's heritage ballroom and experience a bar like no other. Sip well-crafted cocktails under the breathtaking crystal chandeliers or a glass of vintage champagne in front of the six foot fireplace. In the daylight hours, high tea and luxury brunch are featured.

# Nimb **BAR**

---

DELICATE  
COCKTAILS  
IN LUSH  
SURROUNDINGS

Luxury Sunday Brunch

Classic High Tea  
with a Nordic twist

---

49 GUESTS SEATED











The image shows the interior of Nimb Vinotek, a restaurant with a rustic, underground aesthetic. The space is characterized by dark wood paneling on the walls and ceiling, and a floor made of reddish-brown bricks laid in a herringbone pattern. Long, narrow wooden tables are arranged in rows, each accompanied by several light-colored wooden chairs with curved backs. The tables are set with lit candles in black holders, creating a warm, intimate atmosphere. In the background, a bar area with a stone wall and various bottles is visible. The lighting is soft and focused on the tables, with some light coming from lanterns hanging from the ceiling.

# Nimb VINOTEK

---

WINE, SNACKS  
AND RUSTIC DISHES

An underground  
cathedral of wine

---

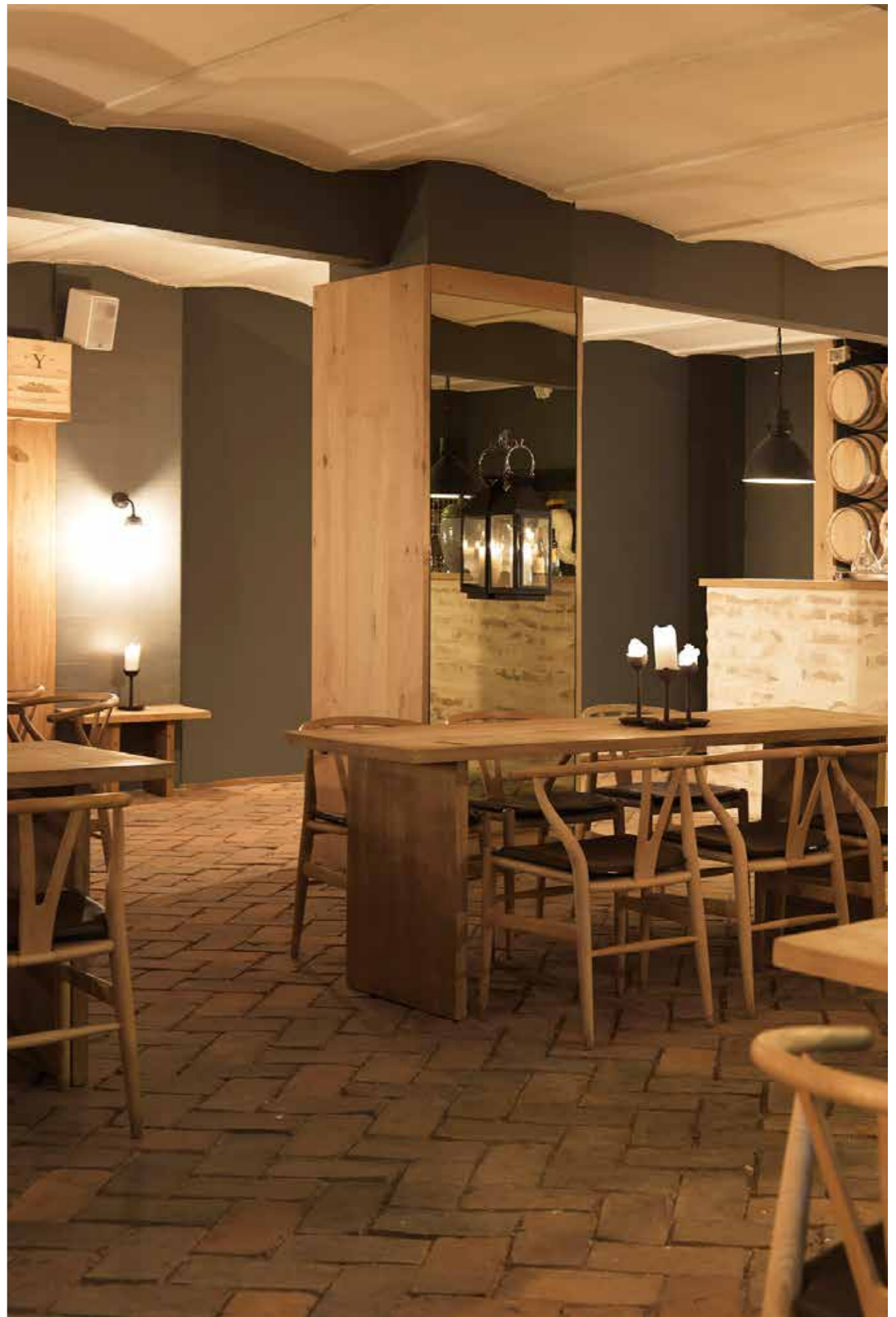
65 GUESTS SEATED

## ABOUT:


The Vinotek is for wine lovers!  
In unpretentious and raw surroundings,  
our sommelier offers great tastings for  
both new and experienced oenophiles.

And of course the head chef  
has created delicious rustic dishes  
that match the wines perfectly.









## Nimb BAR'N'GRILL

---

### STEAKS & SEAFOOD

The sizzling of large steaks, the clinking of great wines, the scent of grilled seafood

---

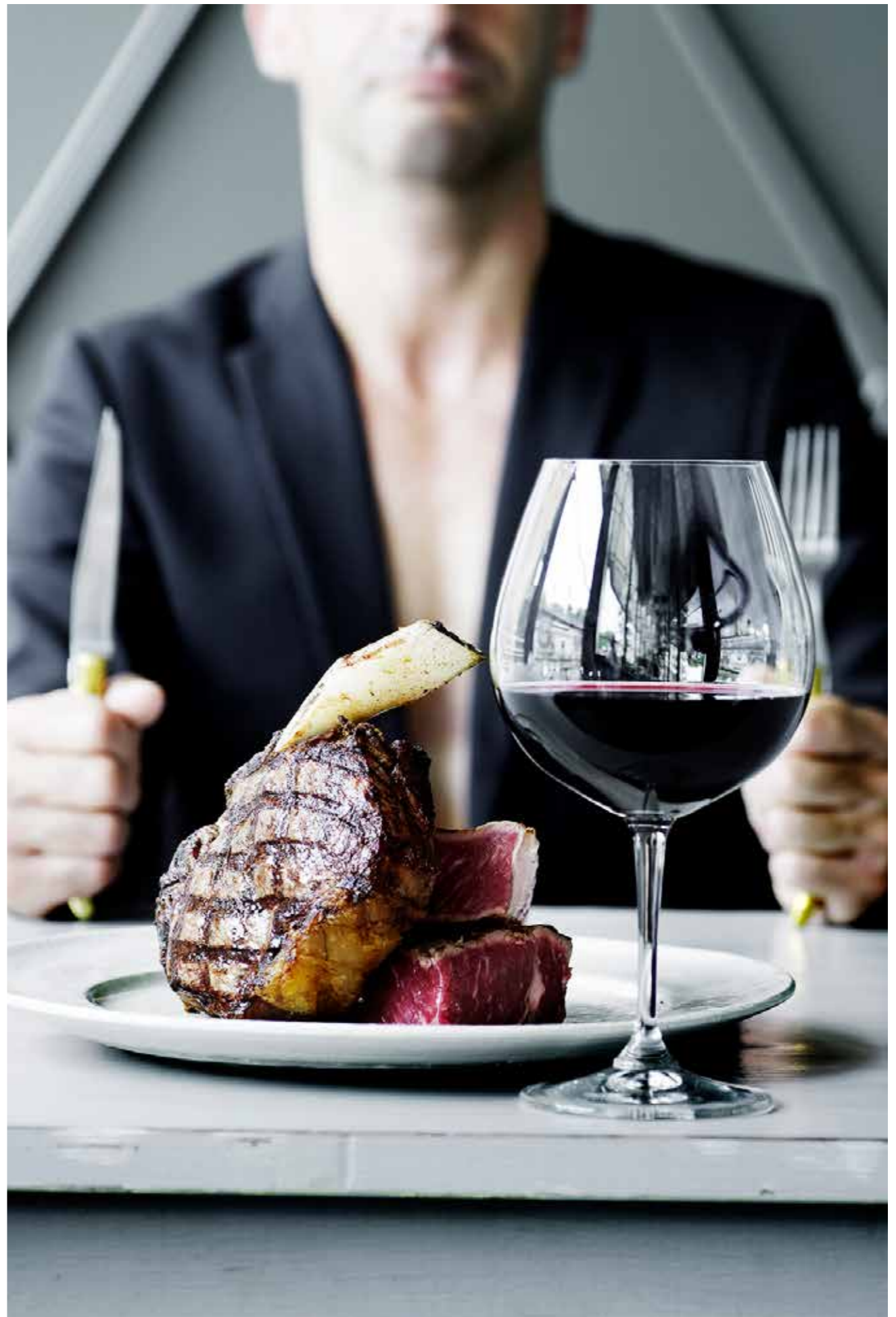
42 GUESTS SEATED

#### ABOUT:

With a view of the busy streets of Copenhagen, this little gem is both intimate and cosmopolitan.

Forget about the world outside for a couple of hours and dive into an irresistible menu of steaks to die for and delicate sea food, all paired with great wines and classic cocktails.









**ABOUT:**

Nimb Terrasse is Nordic gastronomy with a special focus on culinary craftsmanship. We strive for an extraordinary experience with exquisite service, and carefully selected local produce. Enjoy lunch, dinner, or our renowned pastry table, surrounded by beautiful scenery in a peaceful oasis in the heart of Tivoli.

## Nimb TERRASSE

---

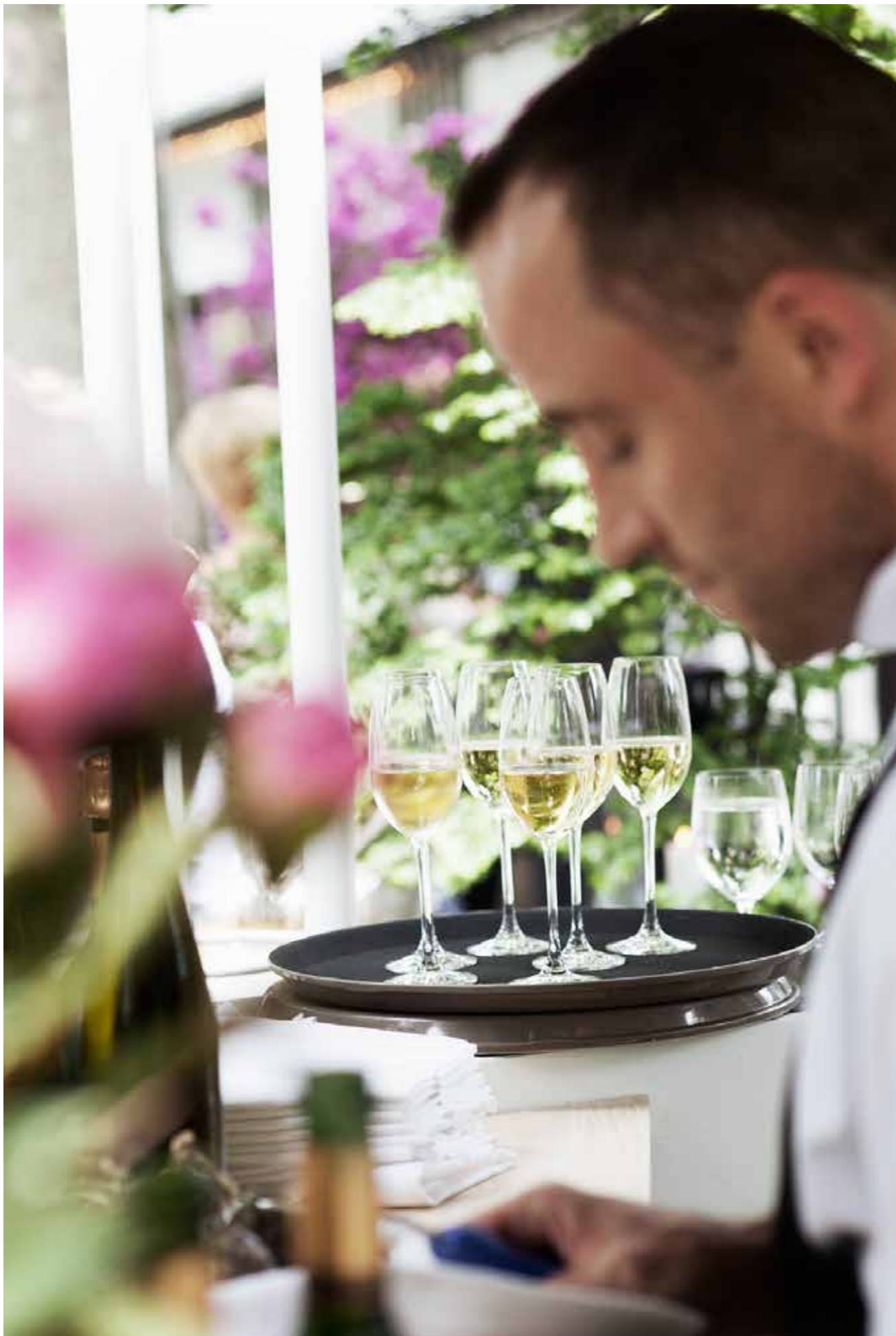
NORDIC  
GASTRONOMY

A light and natural  
cuisine with a sense  
of good taste.  
Business lunch  
A la carte  
Pastry days

---

98 GUESTS SEATED









*Nimb*  
TERRASSE

---

ASSORTED CAKES  
& PASTRIES AD LIBITUM

Incl. hot chocolate,  
coffee and tea

---

Saturday – Sunday  
from 1:30 pm





ABOUT:

Fru Nimb is a classic Danish open sandwich restaurant, lavishly topped with love; a love of good ingredients and a love of good experiences! The menu has over 50 different enticing dishes to choose from, and an impressive selection of homemade aquavit with ingredients from Tivoli Gardens to accompany them.

## FRU NIMB

---

CLASSIC DANISH  
OPEN FACE  
SANDWICH

More than 50 sandwich to  
choose from

Large selection of aquavit  
and gourmet beer

---

132 GUESTS SEATED

100 GUESTS  
OUTDOOR TERRACE

















# Nimb

A PART OF TIVOLI





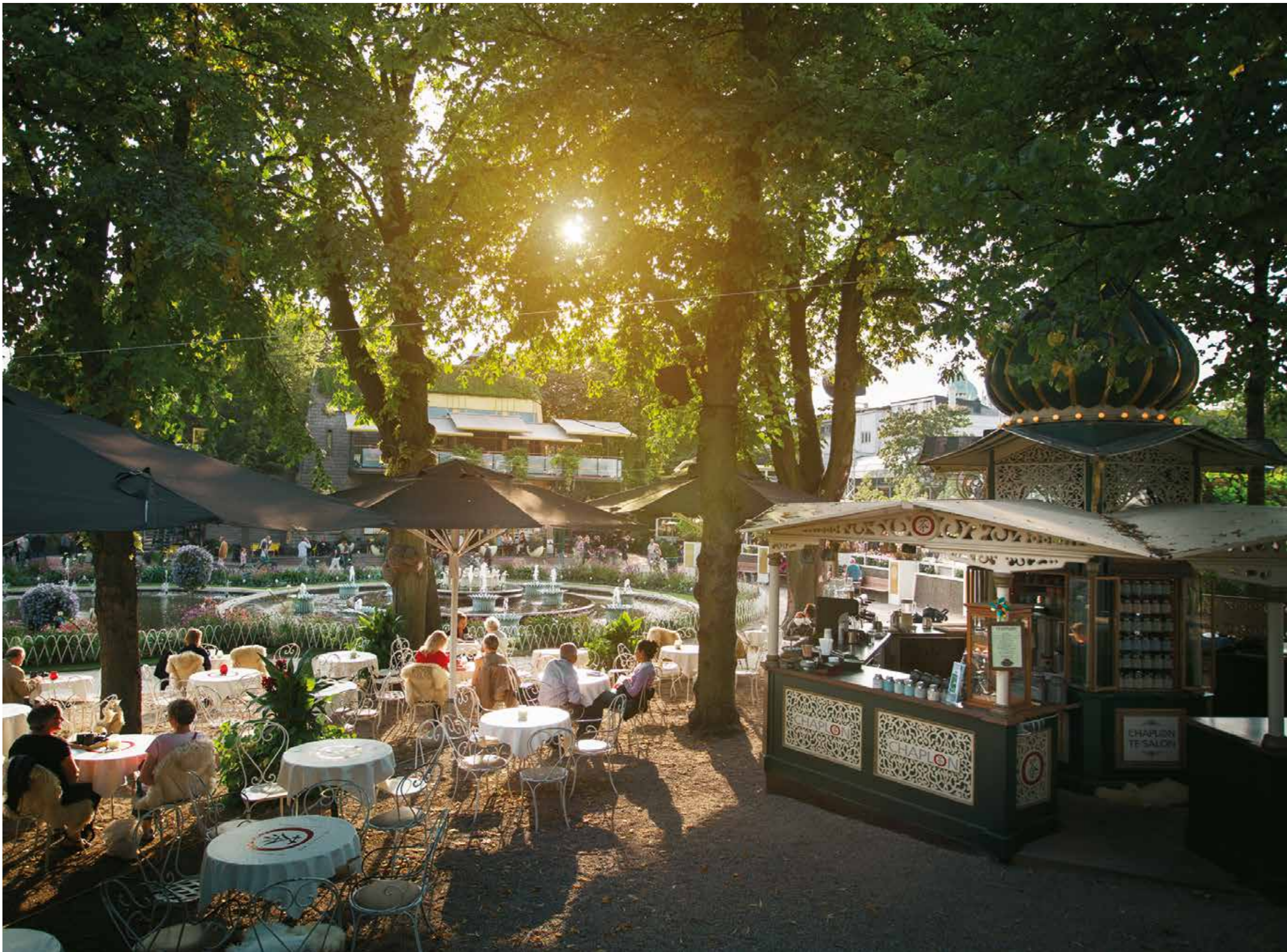










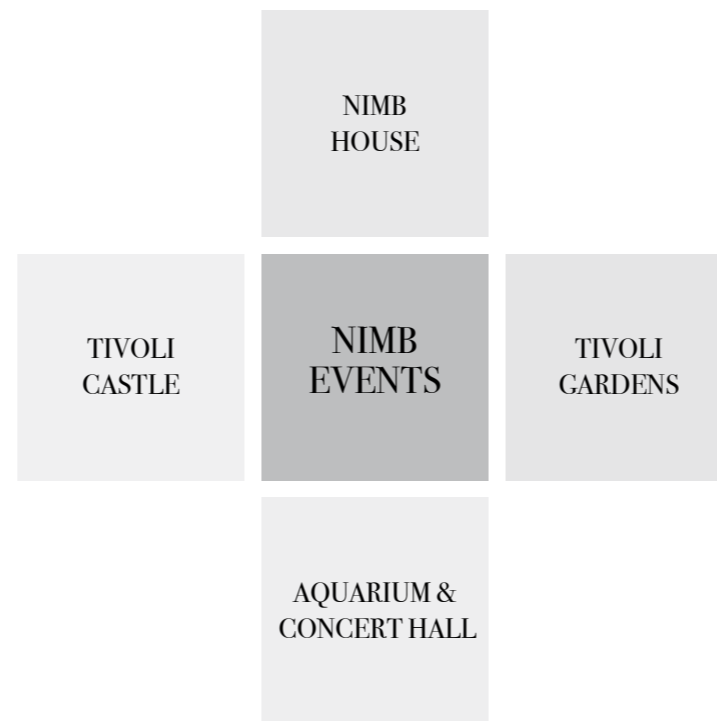






*Nimb*  
EVENTS





**Nimb House**

Tivoli's magical Moorish palace offers views to the flower gardens and welcomes visitors to a world of luxury and splendour – a place of romance perfectly suited to memorable moments.

The conference venues offer a Nordic touch and unique attention to detail. The century-old palace also adds spice to the experience at the Nimb cocktail bar, the well-stocked wine bar and the open-terraced grand brasserie lounge.

**Tivoli Gardens**

With flower gardens, open-air concerts and rip-roaring rollercoasters, Tivoli Gardens has something for everyone – experiences with verve and surprise. Conference guests in Tivoli Gardens enjoy the unique opportunity to combine events held at the many venues and unique locations including parkland pavilions with tummy-tickling rides and world-class entertainment.

**Aquarium & Concert Hall**

A rooftop experience at the VIP Balanchine Lounge with views to the leafy gardens combined with evening dining in the amazing ocean-floor ambience of Europe's longest saltwater aquarium – that's the true magic of the Tivoli Concert Hall.

Conferences are hosted in the state-of-the-art Lumbye Hall and events can be staged in the Concert Hall itself with added musical extravaganza.

**Tivoli Castle**

Tivoli Castle is home to two festive heritage halls. One, called the Tivoli Castle, is a classic atrium – a spacious venue and the perfect setting for events from fashion shows to cocktail receptions. The other, the Andersen Hall, pays tribute to Denmark's famous fairytale writer and offers ample space for grand banquets complete with live performances.





## Nimb ROTUNDEN

---

Capacity:  
Max 80 guests

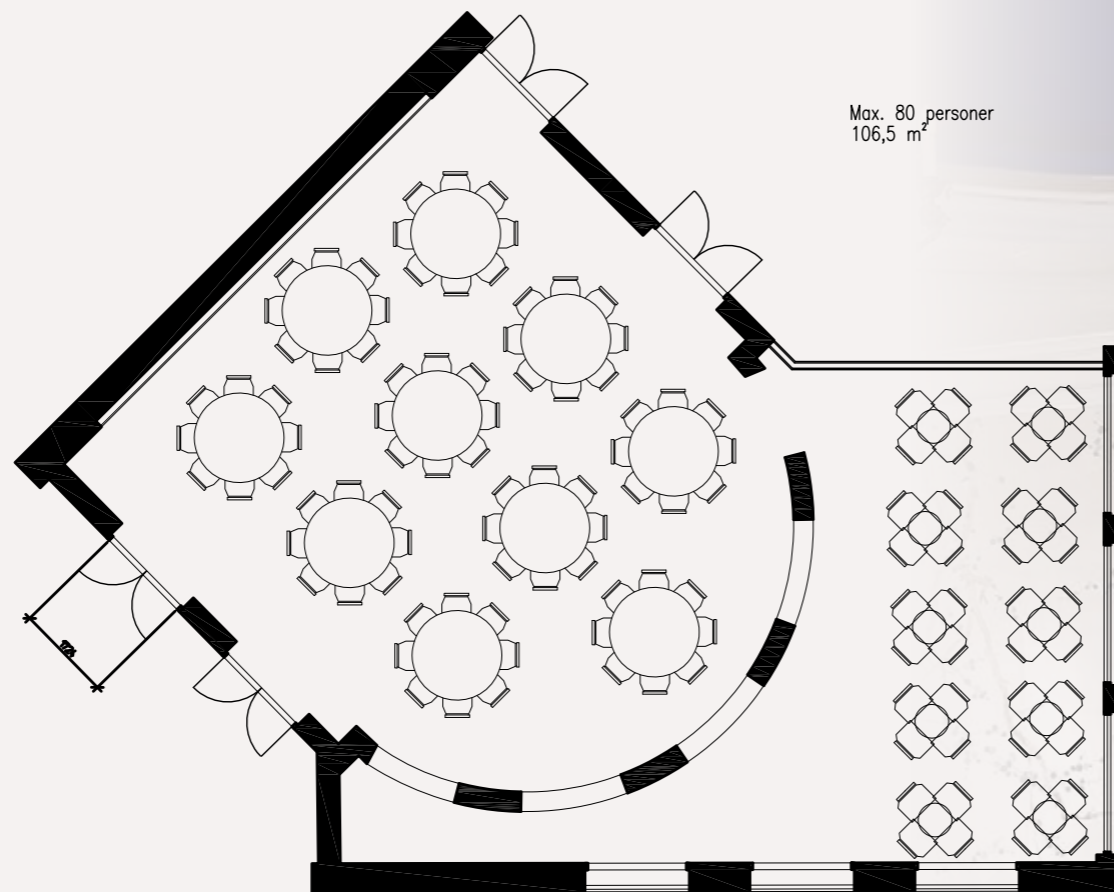
Standard AV equipment:  
Projector  
Screen  
Flip-over/whiteboard  
Paper and pen

Free wifi









Max. 80 personer  
106,5 m<sup>2</sup>

## Nimb ROTUNDEN

106 m<sup>2</sup>

Standard AV equipment:  
Projector  
Screen  
Flip-over/whiteboard  
Paper and pen

Free wifi

Rooms // People	Theatre style	Classroom	U-shape	Boardroom	Reception	m <sup>2</sup>	Ceiling height	Daylight	Max capacity
<b>Rotunden</b>	<b>110</b>	–	–	<b>60</b>	–	<b>106</b>	<b>5</b>	<b>Yes</b>	<b>80</b>
Kuplen	–	–	–	20	–	20	4,2	Yes	20
Bar	–	–	–	–	100	250	6,7	No	80
Mirror room	–	–	–	16	25	60	2,5	Yes	32
Vinotek	–	–	–	–	90	188	2,8	No	90
Kabinettet	–	–	–	16	–	36	2,9	Yes	16
Salon 1-2-3-4	80	50	30	30	120	121	2,9	Yes	100





## Nimb KUPLEN

---

Capacity:  
Max 20 guests

Standard AV equipment:  
Projector  
Screen  
Flip-over/whiteboard  
Paper and pen

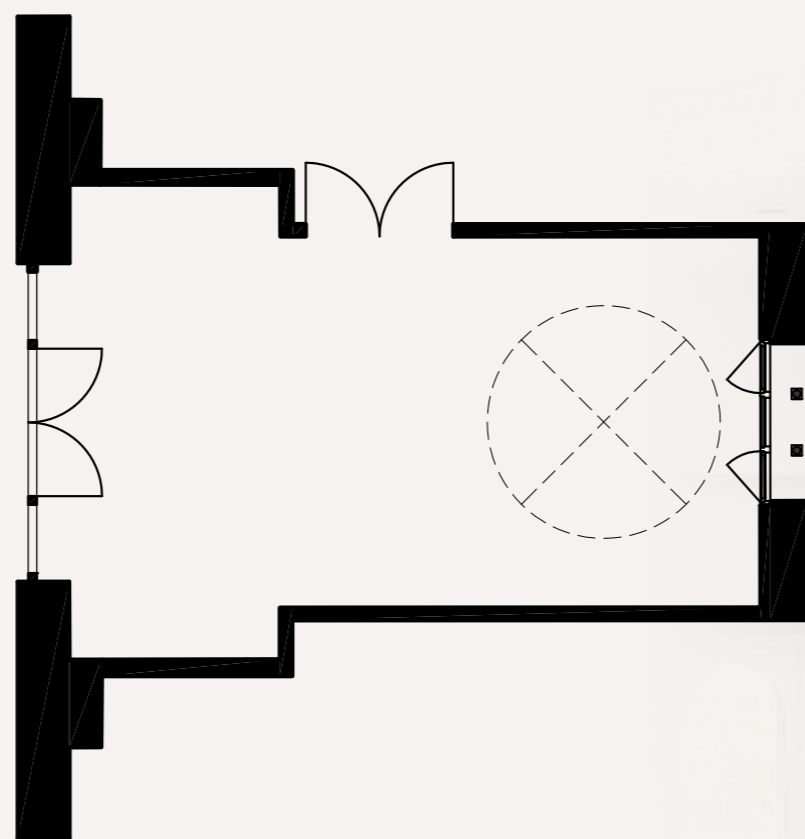
Free wifi

Air conditioning









## Nimb KUPLEN

20 m<sup>2</sup>

Standard AV equipment:  
Projector  
Screen  
Flip-over/whiteboard  
Paper and pen

Free wifi

Air conditioning

Rooms // People	Theatre style	Classroom	U-shape	Boardroom	Reception	m <sup>2</sup>	Ceiling height	Daylight	Max capacity
Rotunden	110	–	–	60	–	106	5	Yes	80
<b>Kuplen</b>	–	–	–	<b>20</b>	–	<b>20</b>	<b>4,2</b>	<b>Yes</b>	<b>20</b>
Bar	–	–	–	–	100	250	6,7	No	80
Mirror room	–	–	–	16	25	60	2,5	Yes	32
Vinotek	–	–	–	–	90	188	2,8	No	90
Kabinettet	–	–	–	16	–	36	2,9	Yes	16
Salon 1-2-3-4	80	50	30	30	120	121	2,9	Yes	100





# Nimb BAR

Capacity:  
Max 50 guests

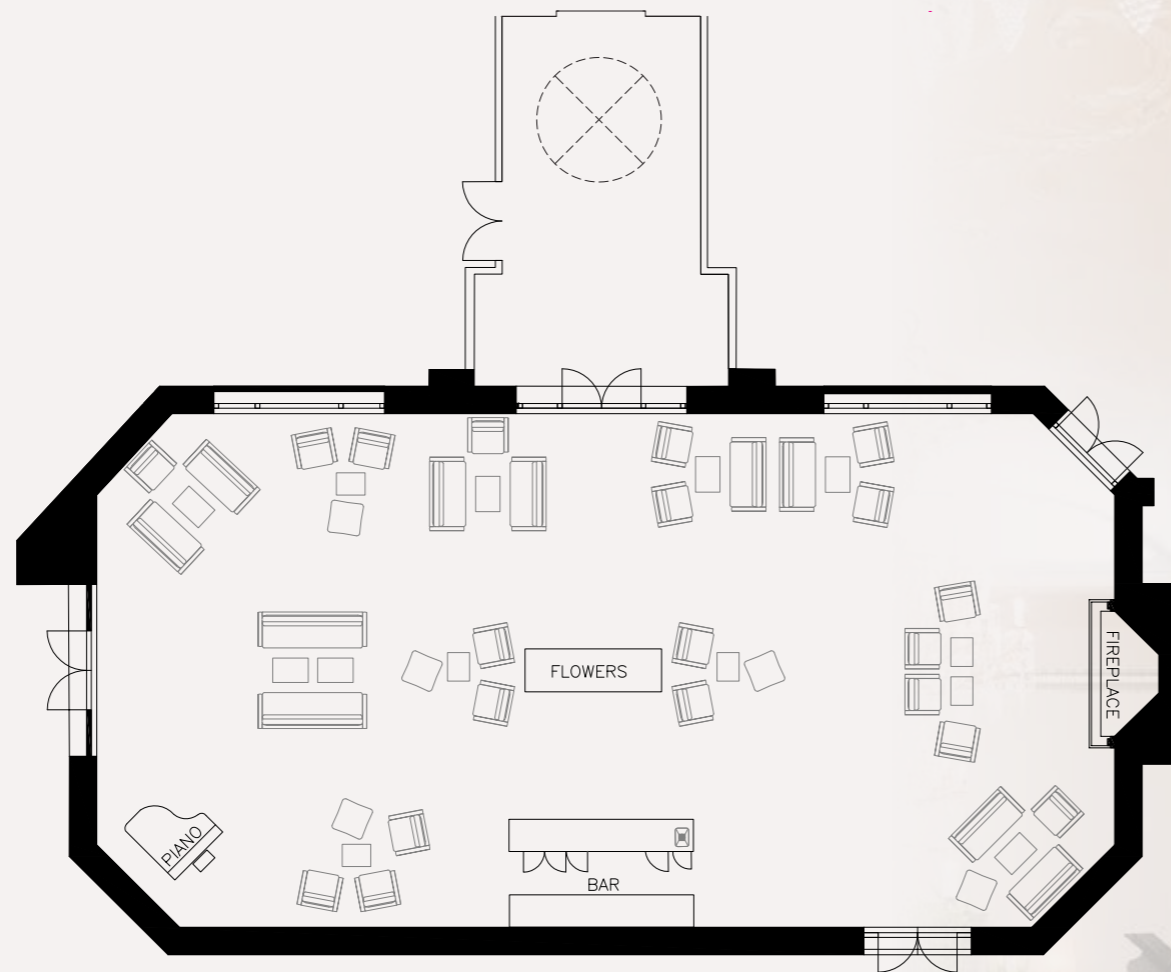
Standard AV equipment  
(upon request):  
Projector  
Screen  
Flip-over/whiteboard  
Paper and pen

Free wifi









# Nimb BAR

250 m<sup>2</sup>

Standard AV equipment  
(upon request):  
Projector  
Screen  
Flip-over/whiteboard  
Paper and pen

Free wifi

Rooms // People	Theatre style	Classroom	U-shape	Boardroom	Reception	m <sup>2</sup>	Ceiling height	Daylight	Max capacity
Rotunden	110	–	–	60	–	106	5	Yes	80
Kuplen	–	–	–	20	–	20	4,2	Yes	20
<b>Bar</b>	–	–	–	–	<b>100</b>	<b>250</b>	<b>6,7</b>	<b>No</b>	<b>80</b>
Mirror room	–	–	–	16	25	60	2,5	Yes	32
Vinotek	–	–	–	–	90	188	2,8	No	90
Kabinettet	–	–	–	16	–	36	2,9	Yes	16
Salon 1-2-3-4	80	50	30	30	120	121	2,9	Yes	100





## Nimb SPEJLSTUEN

---

Capacity:  
Max 32 guests

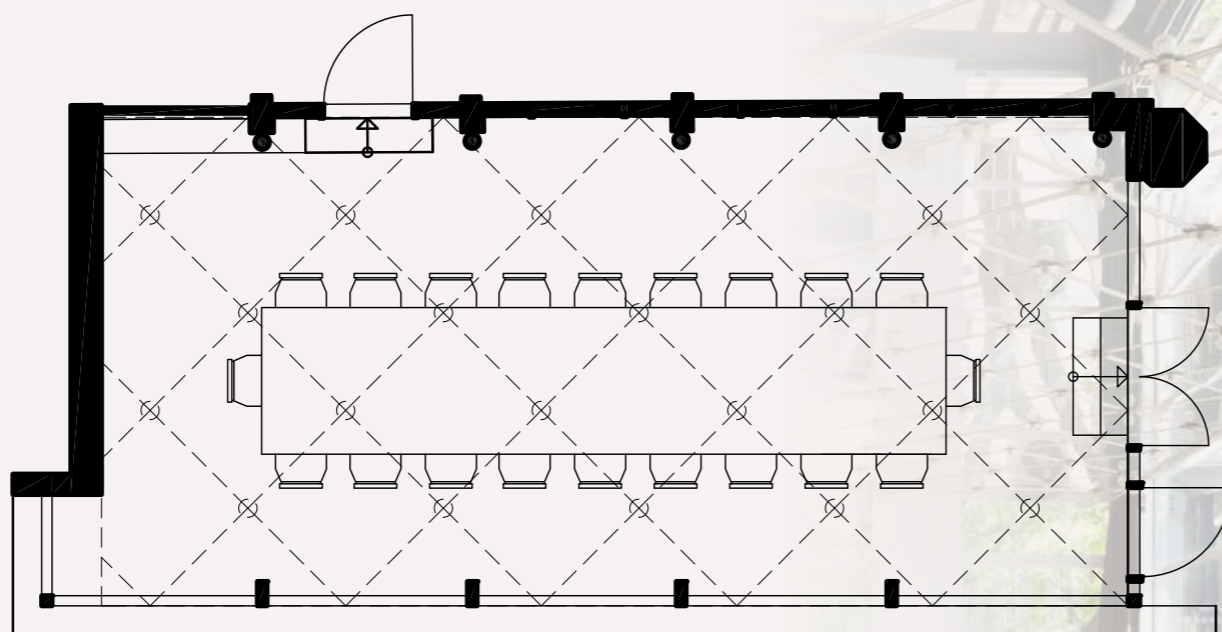
Standard AV equipment  
(upon request):  
Projector  
Screen  
Flip-over/whiteboard  
Paper and pen

Free wifi









## Nimb SPEJLSTUEN

60 m<sup>2</sup>

Standard AV equipment

(upon request):

Projector

Screen

Flip-over/whiteboard

Paper and pen

Free wifi

Rooms // People	Theatre style	Classroom	U-shape	Boardroom	Reception	m <sup>2</sup>	Ceiling height	Daylight	Max capacity
Rotunden	110	–	–	60	–	106	5	Yes	80
Kuplen	–	–	–	20	–	20	4,2	Yes	20
Bar	–	–	–	–	100	250	6,7	No	80
<b>Mirror room</b>	–	–	–	<b>16</b>	<b>25</b>	<b>60</b>	<b>2,5</b>	<b>Yes</b>	<b>32</b>
Vinotek	–	–	–	–	90	188	2,8	No	90
Kabinettet	–	–	–	16	–	36	2,9	Yes	16
Salon 1-2-3-4	80	50	30	30	120	121	2,9	Yes	100





Nimb  
**VINOTEK**

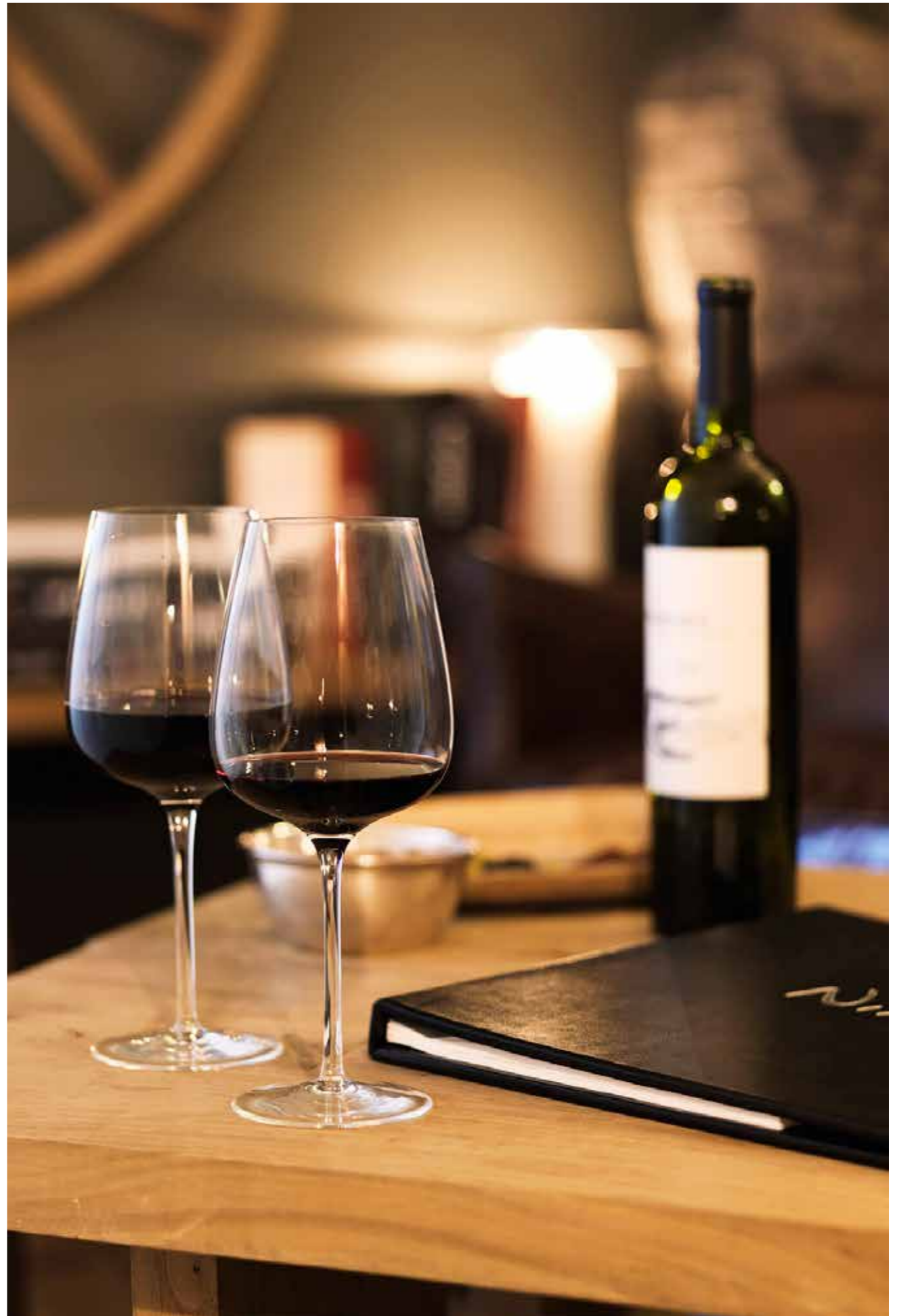
---

Capacity:  
Max 90 guests

Standard AV equipment  
(upon request):  
Projector  
Screen  
Flip-over/whiteboard  
Paper and pen

Free wifi









# Nimb VINOTEK

188 m<sup>2</sup>

Standard AV equipment  
(upon request):  
Projector  
Screen  
Flip-over/whiteboard  
Paper and pen

Free wifi

Rooms // People	Theatre style	Classroom	U-shape	Boardroom	Reception	m <sup>2</sup>	Ceiling height	Daylight	Max capacity
Rotunden	110	–	–	60	–	106	5	Yes	80
Kuplen	–	–	–	20	–	20	4,2	Yes	20
Bar	–	–	–	–	100	250	6,7	No	80
Mirror room	–	–	–	16	25	60	2,5	Yes	32
<b>Vinotek</b>	–	–	–	–	<b>90</b>	<b>188</b>	<b>2,8</b>	<b>No</b>	<b>90</b>
Kabinettet	–	–	–	16	–	36	2,9	Yes	16
Salon 1-2-3-4	80	50	30	30	120	121	2,9	Yes	100





## Nimb CABINET

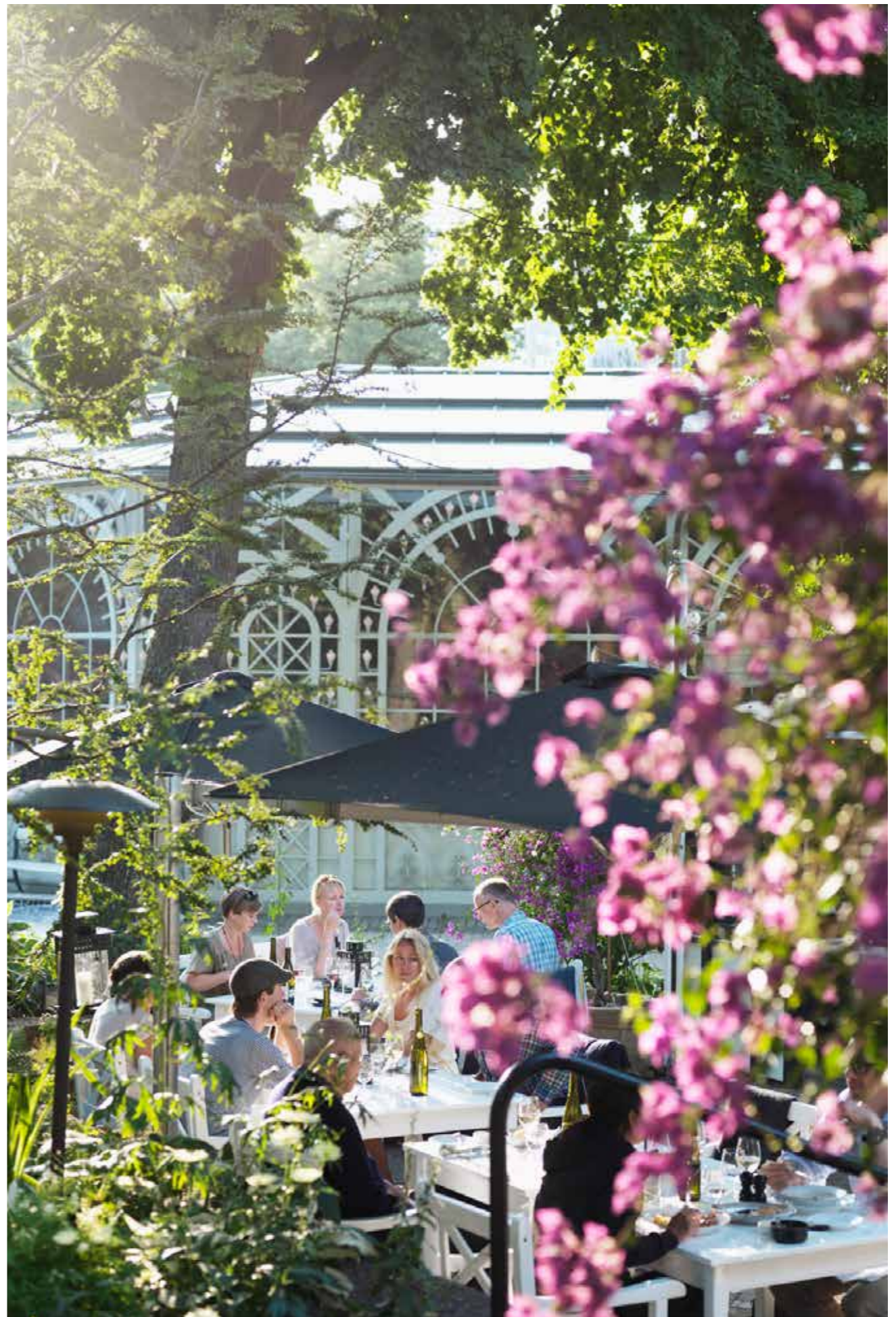
---

Capacity:  
Max 16 guests

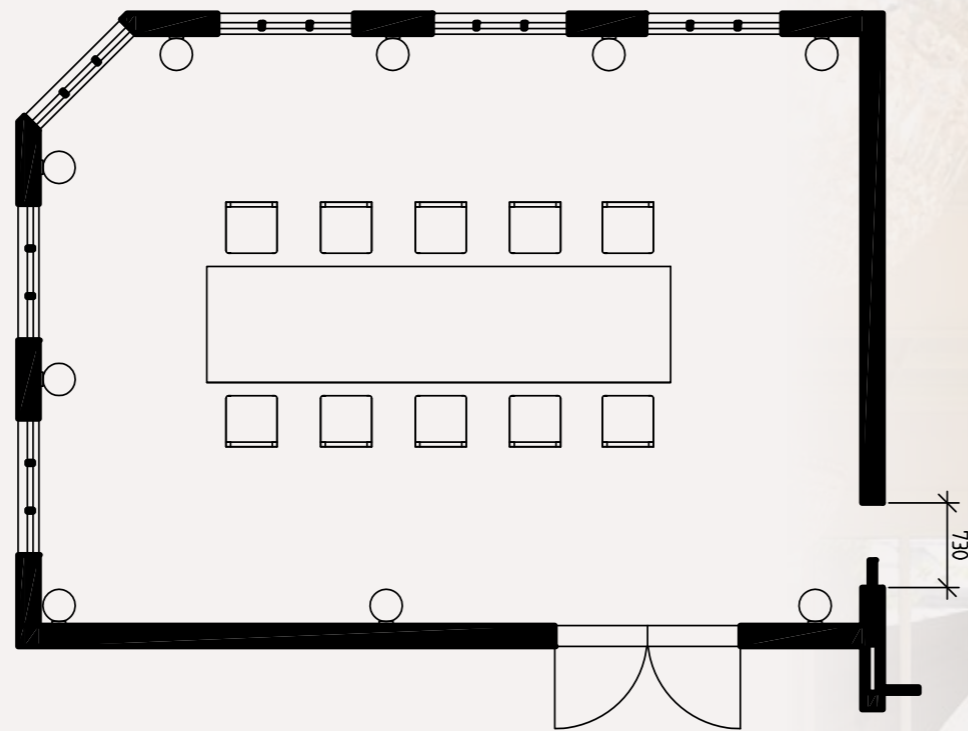
Standard AV equipment:  
Projector  
Screen  
Flip-over/whiteboard  
Paper and pen

Free wifi









## Nimb CABINET

36 m<sup>2</sup>

Standard AV equipment:  
Projector  
Screen  
Flip-over/whiteboard  
Paper and pen

Free wifi

Rooms // People	Theatre style	Classroom	U-shape	Boardroom	Reception	m <sup>2</sup>	Ceiling height	Daylight	Max capacity
Rotunden	110	–	–	60	–	106	5	Yes	80
Kuplen	–	–	–	20	–	20	4,2	Yes	20
Bar	–	–	–	–	110	250	6,7	No	80
Mirror room	–	–	–	16	25	60	2,5	Yes	32
Vinotek	–	–	–	–	90	188	2,8	No	90
<b>Kabinettet</b>	–	–	–	<b>16</b>	–	<b>36</b>	<b>2,9</b>	<b>Yes</b>	<b>16</b>
Salon 1-2-3-4	80	50	30	30	120	121	2,9	Yes	100





## Nimb SALONS I-II-III-IV

---

Capacity:  
Max 120 guests

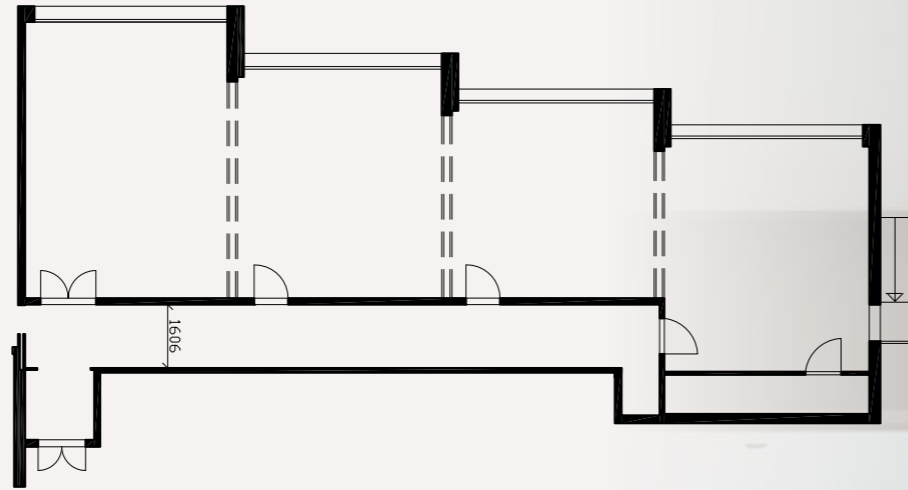
Standard AV equipment  
(upon request):  
Projector  
Screen  
Flip-over/whiteboard  
Paper and pen

Free wifi









Salon 1-2-3-4 // People	Theatre style	Classroom	U-shape	Boardroom	Reception	m <sup>2</sup>	Celing height	B&O Screen
Salon 1	30	14	12	14	30	36	2,9	Yes
Salon 2	30	10	12	14	30	30	2,9	No
Salon 3	15	10	12	14	30	25	2,9	Yes
Salon 4	30	14	12	14	30	30	2,9	Yes

Rooms // People	Theatre style	Classroom	U-shape	Boardroom	Reception	m <sup>2</sup>	Ceiling height	Daylight	Max capacity
Rotunden	110	–	–	60	–	106	5	Yes	80
Kuplen	–	–	–	20	–	20	4,2	Yes	20
Bar	–	–	–	–	100	250	6,7	No	80
Mirror room	–	–	–	16	25	60	2,5	Yes	32
Vinotek	–	–	–	–	90	188	2,8	No	90
Kabinettet	–	–	–	16	–	36	2,9	Yes	16
<b>Salon 1-2-3-4</b>	<b>80</b>	<b>50</b>	<b>30</b>	<b>30</b>	<b>120</b>	<b>121</b>	<b>2,9</b>	<b>Yes</b>	<b>100</b>

## Nimbo SALONS I-II-III-IV

121 m<sup>2</sup>

Standard AV equipment  
(upon request):  
Projector  
Screen  
Flip-over/whiteboard  
Paper and pen

Free wifi





**TIVOLI**  
.....  
**BALANCHINE  
LOUNGE**

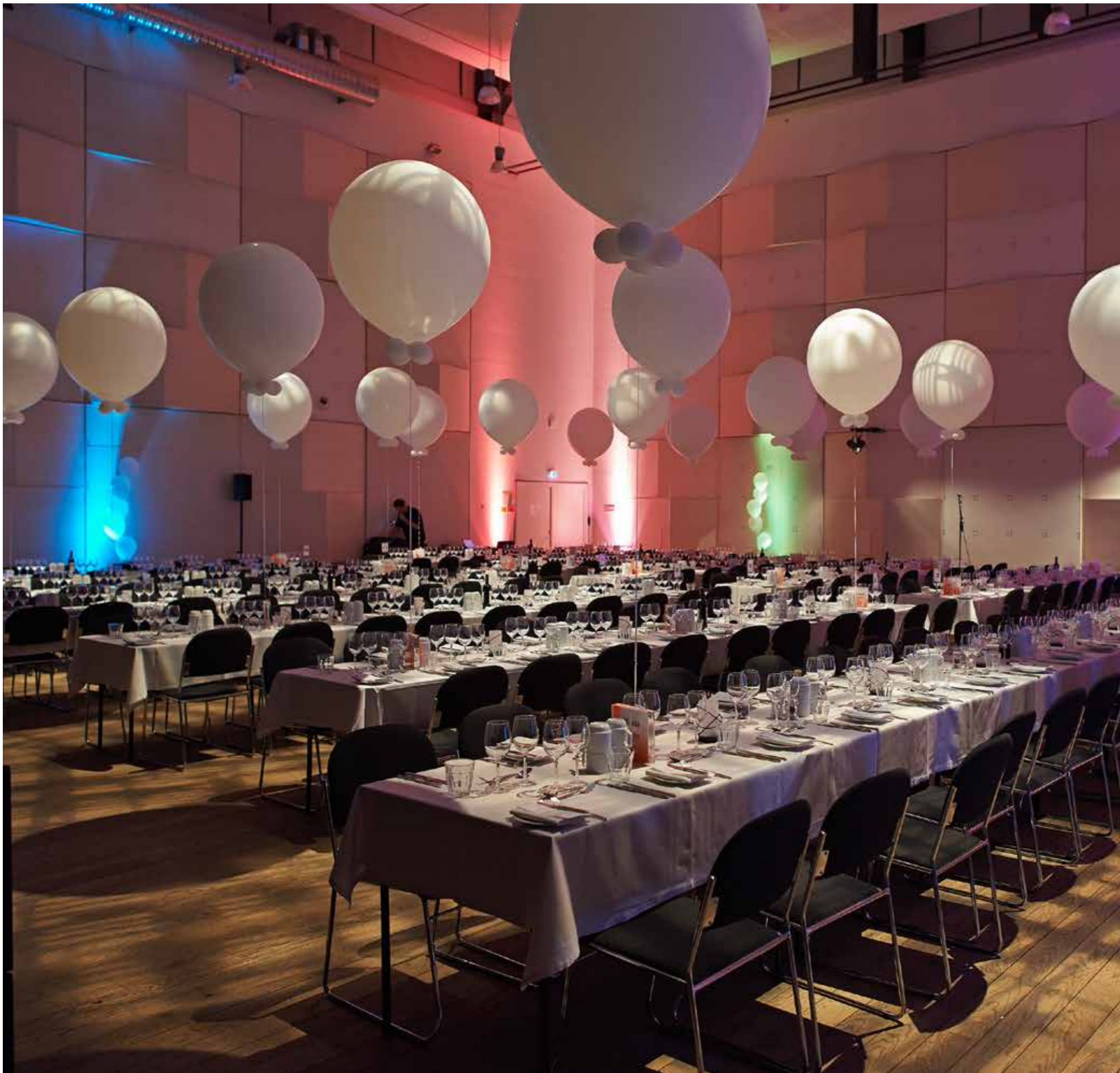
---

Capacity:  
Max 80 guests

Standard AV equipment  
(upon request):  
Projector  
Screen  
Flip-over/whiteboard  
Paper and pen

Free wifi





**TIVOLI**  
.....  
**LUMBYE  
HALL**

---

Capacity:  
Max 300 guests

Standard AV equipment:  
Projector  
Screen  
Flip-over/whiteboard  
Paper and pen  
Free wifi





**TIVOLI**  
.....  
**TIVOLI**  
**CASTLE**

---

Capacity:  
Max 200 guests

Standard AV equipment:  
Projector  
Screen  
Flip-over/whiteboard  
Paper and pen

Free wifi





**TIVOLI**  
.....

## ANDERSEN HALL

---

Capacity:  
Max 349 guests.

Standard AV equipment:  
Projector  
Screen  
Flip-over/whiteboard  
Paper and pen

Free wifi





## **TIVOLI** ..... AQUARIUM

---

Capacity:  
Max 600 guests.

Standard AV equipment  
(upon request):  
Projector  
Screen  
Flip-over/whiteboard  
Paper and pen

Free wifi





**TIVOLI**  
.....  
GLASS HALL  
THEATRE

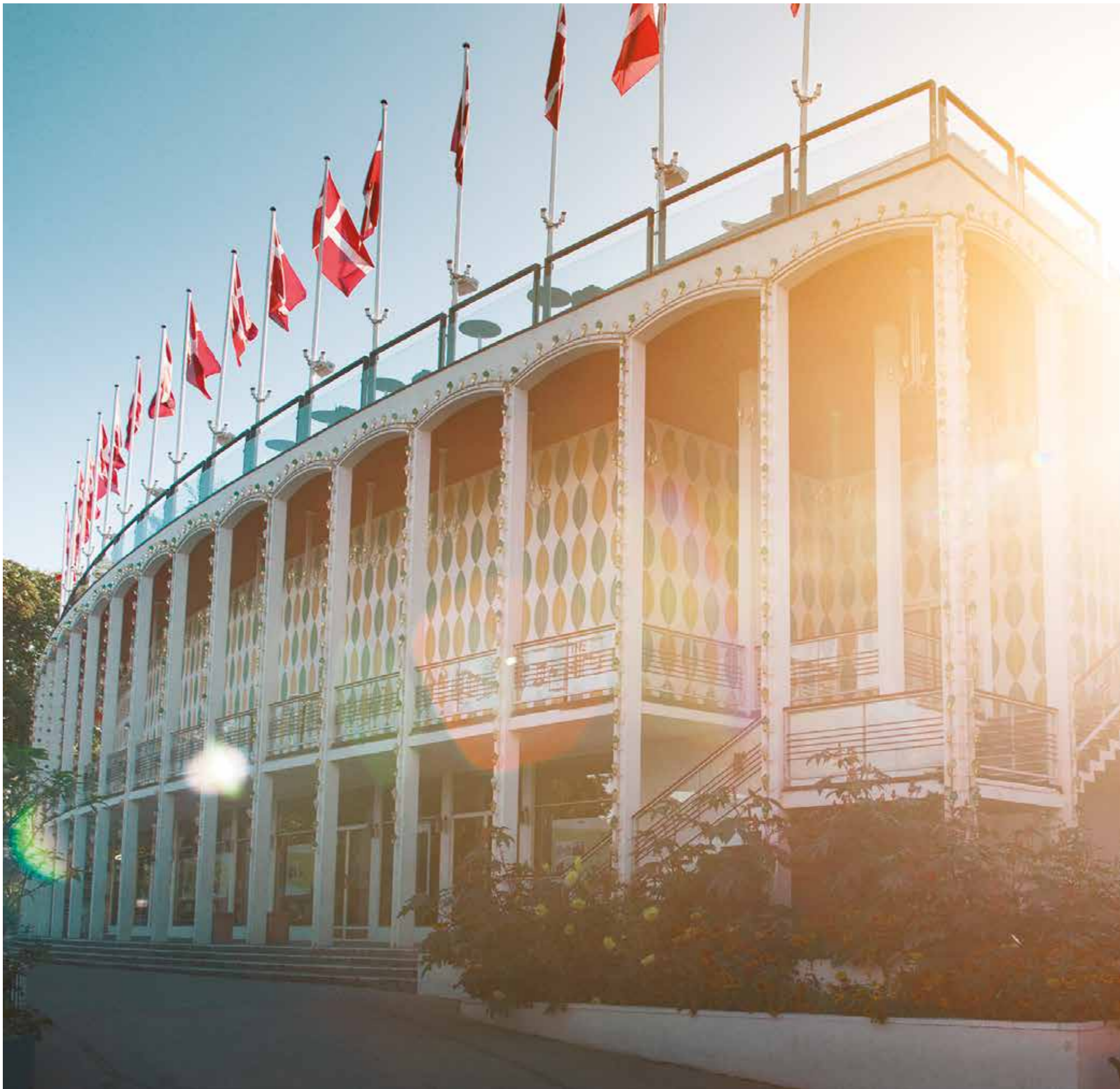
---

Capacity – Theatre style:  
Max 969 guests

Standard AV equipment  
(upon request):  
Projector  
Screen  
Flip-over/whiteboard  
Paper and pen

Free wifi





## **TIVOLI** ..... CONCERT HALL

---

Capacity – Theatre style:  
Max 1626 guests

Standard AV equipment  
(upon request):  
Projector  
Screen  
Flip-over/whiteboard  
Paper and pen

Free wifi





Nimb

nimb.dk  
info@nimb.dk  
33750247